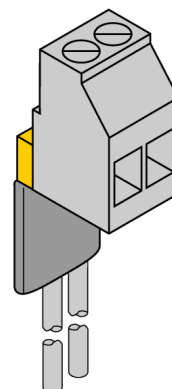
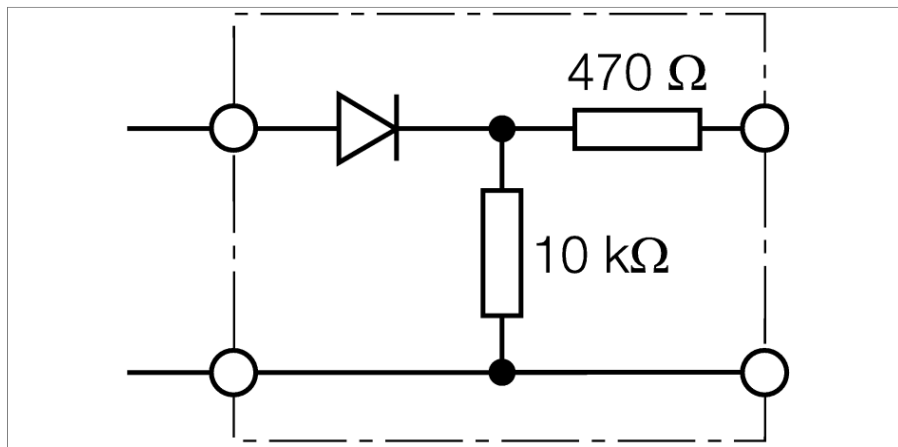


Accessories

WM3



The resistor module meets the requirements for line monitoring between a mechanical contact and a signal processor. The input circuit is designed for sensors according to EN60947-5-6 (NAMUR) and is equipped with a wire-break and short-circuit monitoring function.

The cable between the mechanical contact and the resistor module should be kept short because monitoring of this section is not possible.

Thanks to the small design, the WM3 fits in most switching cabinets.

The connection is established on one side via the cable ends and on the other side via screw terminals.

The WM3 is designed for use with the TURCK signal processor MS15-231Ex0-R in case only one channel is used or no NAMUR sensors are used.

The internal circuitry of the WM3 consists of resistors and a diode and is classified as simple electrical equipment acc. to EN 60079 (DIN VDE 0165-1) for which an approval is not required. It can therefore be installed in intrinsically safe circuits in Ex-areas.

- Resistor circuitry only for MS15-231Ex0-R
- Screw terminals up to 2.5 mm

Dimensions

Type	WM3
ID	0912103
Ex approval acc. to conformity certificate	einfaches elektrisches Betriebsmittel nach EN60079-14, eine Zulassung ist nicht erforderlich
Mechanical data	
Protection class	IP20
Dimensions	11 x 10 x 150 mm
Weight	13 g
Housing material	Plastic, Polycarbonate/ABS
Terminal cross-section	2.5 mm ²

