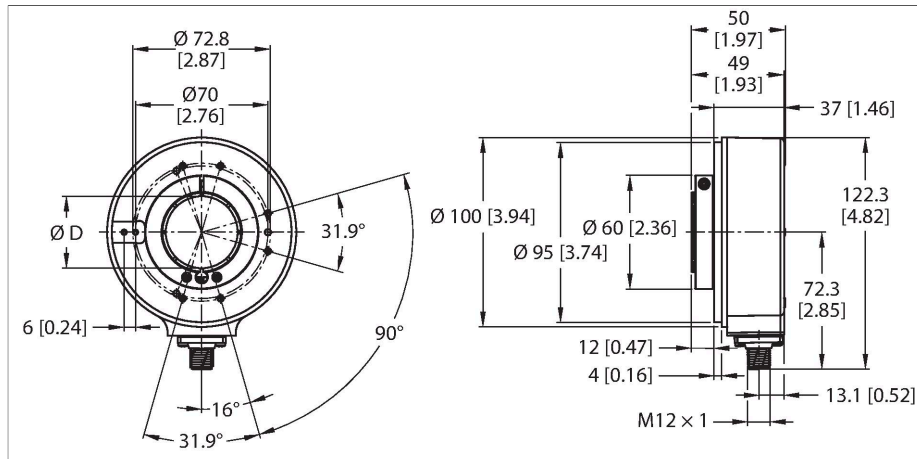


REI-43H38S-2B50-H1181

Incremental Encoder

Industrial Line



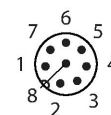
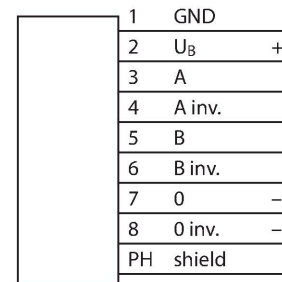
Features

- Flange without mounting element, Ø 100 mm
- Hollow shaft, Ø 38 mm
- Optical measuring principle
- Shaft material: stainless steel
- Protection class IP65 on housing and shaft side
- -40 ... +80 °C
- Max. 6000 rpm (at 60 °C: 2500 rpm)
- 10...30 VDC
- Push-pull/HTL invertible
- Pulse frequency max. 300 kHz
- M12 × 1 male connector, 8-pin
- 50 pulses per revolution

Technical data

Type	REI-43H38S-2B50-H1181
ID	100011431
Measuring principle	Optical
General data	
Max. Rotational Speed	6000 rpm
Moment of inertia of the rotor	220 × 10 ⁻⁶ kgm ²
Starting torque	< 0.2 Nm
Output type	Incremental
Resolution, incremental	50 ppr
Electrical data	
Operating voltage	10...30 VDC
No-load current	100 mA
Output current	≤ 30 mA
Short-circuit protection	yes
Wire breakage/Reverse polarity protection	yes
Pulse frequency max.	300 kHz
Signal level high	min. U _B - 3 V
Signal level low	max. 2.5 V
Output function	Push-Pull/HTL, invertible
Mechanical data	
Design	Hollow shaft
Flange type	Flange without mounting element
Flange diameter	Ø 100 mm
Shaft Type	Hollow shaft
Shaft diameter D [mm]	38

Wiring diagram

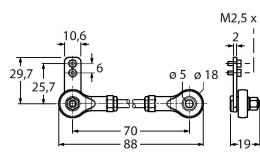
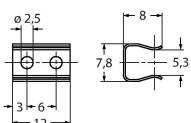
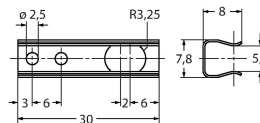
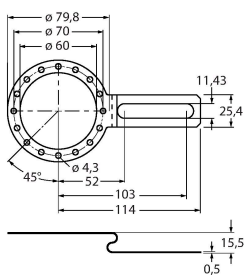
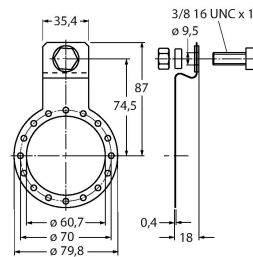


Technical data

Shaft material	Stainless steel
Housing material	Die-cast zinc
Electrical connection	Connector, M12 × 1
	8-pin
Environmental conditions	
Ambient temperature	-40...+80 °C
Vibration resistance (EN 60068-2-6)	10 g (100 m/s ²), 10...2000 Hz
Shock resistance (EN 60068-2-27)	200 g (2000 m/s ²), 6 ms
Protection class	IP65
Protection class shaft	IP65

Accessories

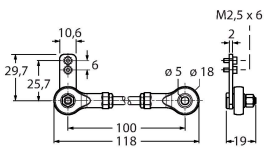
RSA-7	1544808	Inlay, outer diameter 38 mm, inner diameter 12 mm	RSA-10	1545465	Inlay, outer diameter 38 mm, inner diameter 25 mm
RSA-11	1545469	Inlay, outer diameter 38 mm, inner diameter 16 mm	RME-5	1544616	Stainless steel mounting panel for hollow shaft encoders, reference diameter 149 mm, for applications with axial play
RME-6	1544617	Stainless steel mounting panel for hollow shaft encoders, reference diameter 104...206 mm, for applications with fixing points on adjustable reference diameter	RME-10	1544621	Stainless steel mounting element for hollow shaft encoders, pitch diameter 110 mm, for applications with high axial play
RME-11	1544622	Stainless steel mounting element for hollow shaft encoders, pitch diameter 76 mm, for applications with limited mounting space	RME-15	1544626	Metal arm bracket, for hollow shaft encoders, length 70 mm; for applications with little axial and radial play; flexibly adjustable



RME-16

1544627

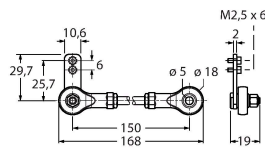
Metal arm bracket, for hollow shaft encoders, length 100 mm; for applications with little axial and radial play; flexibly adjustable



RME-17

1544628

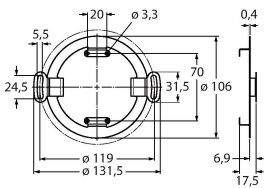
Metal arm bracket, for hollow shaft encoders, length 150 mm; for applications with little axial and radial play; flexibly adjustable



RME-18

1544629

Stainless steel stator coupling for hollow shaft encoders, reference diameter 119 mm, for highly dynamic applications with axial and radial play



Accessories

Dimension drawing	Type	ID	
	RKC8T-2/TXL	6625142	Connection cable, M12 female connector, straight, 8-pin, cable length: 2 m, jacket material: PUR, black; cULus approval
	WKC8T-2/TXL	6625145	Connection cable, M12 female connector, angled, 8-pin, cable length: 2 m, jacket material: PUR, black; cULus approval