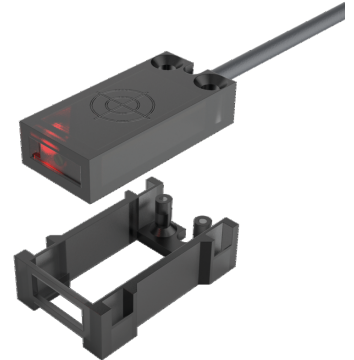
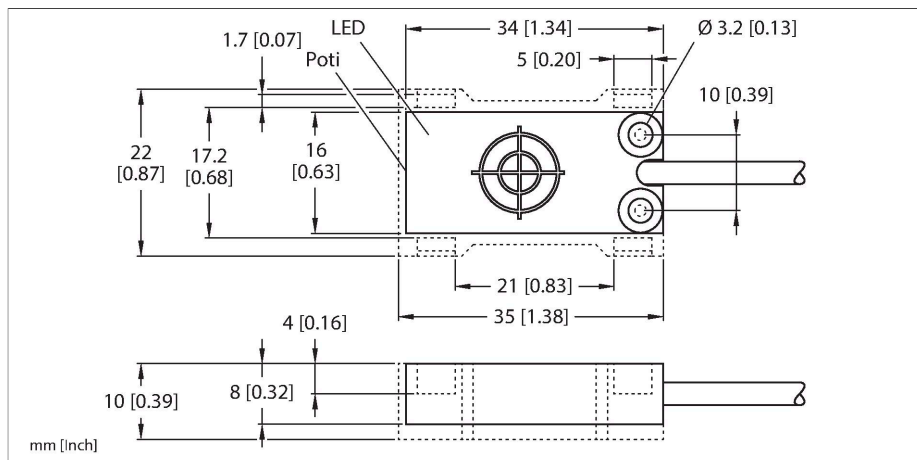


BCE8-QP08-AP6X  
Capacitive Sensor – With Potentiometer



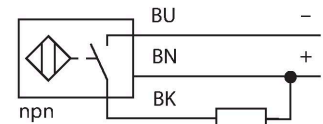
## Technical data

Type	BCE8-QP08-AP6X
ID	100016730
Rated switching distance (flush)	8 mm
Rated switching distance (non-flush)	8 mm
Secured operating distance	≤ (0.72 × Sn) mm
Hysteresis	1...15 %
Repeat accuracy	≤ 5 % of full scale
Ambient temperature	-30...+70 °C
Electrical data	
Operating voltage U <sub>B</sub>	12...30 VDC
Ripple U <sub>ss</sub>	≤ 10 % U <sub>Bmax</sub>
DC rated operating current I <sub>B</sub>	≤ 50 mA
No-load current	≤ 10 mA
Residual current	≤ 0.1 mA
Switching frequency	0.1 kHz
Isolation test voltage	0.075 kV
Output function	3-wire, NO contact, PNP
Short-circuit protection	yes/Cyclic
Voltage drop at I <sub>B</sub>	≤ 1.5 V
Wire break/reverse polarity protection	yes/Complete
Tests/approvals	
Approvals	UL
UL registration number	E210608
Mechanical data	
Design	Rectangular, QP08
Dimensions	34 x 16 x 8 mm
Housing material	Plastic, PP

## Features

- Rectangular, height 8mm
- Plastic, PP
- Mounting frame, PUR
- Fine adjustment via potentiometer
- DC 3-wire, 12...30 VDC
- NO contact, PNP output
- Cable connection

## Wiring diagram



## Functional principle

Capacitive proximity switches are designed for non-contact and wear-free detection of electrically conductive as well as non-conductive metal objects.

Technical data

Active area material	PP
Electrical connection	Cable
Cable quality	Ø 3 mm, LifYY-11Y, PUR, 2 m
Core cross-section	3 x 0.14 mm <sup>2</sup>
Vibration resistance	55 Hz (1 mm)
Shock resistance	30 g (11 ms)
Protection class	IP65
MTTF	680 years acc. to SN 29500 (Ed. 99) 40 °C
Power-on indication	Green
Switching state	LED, Red
Included in delivery	Mounting frame, screwdriver