

TX100 HMI Series

7" Display with TX VisuPro Runtime

High-Quality Plastic Housing with a Resistive Touch Screen

TX107D-00VPST

Type	TX107D-00VPST
ID	100031621

Display/touch	
Display	TFT colour
Touchscreen	Resistive, Plastic film front
Active screen area	7"
Resolution (pixels)	800 × 480 pixels WVGA
Format	16:9
Brightness	200 cd/m² typ.
dimmmable	Yes

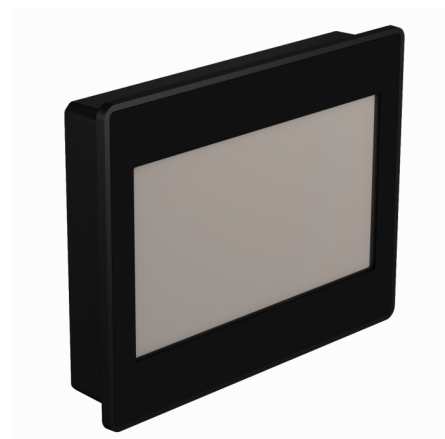
Controller	
Processor	ARM Cortex A9, Dual core 800 MHz
Memory	4 GB Flash
RAM memory	1024 MB
Add-on memory	1 x USB host port

Interfaces	
Onboard	1 x RJ45 Ethernet, 1 x RS232/485/422, 1 x USB host, 1 x power supply
Ethernet	1 x 10/100 Mbit
USB	1 × host port
Serial	RS232 / RS485 / RS422

Power supply	
Rated value	24 VDC, max. 0.3 A
Admissible voltage range	10...32 VDC


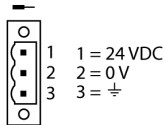
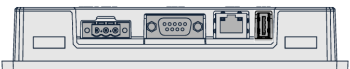
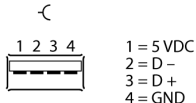

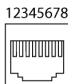
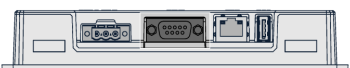
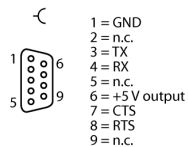
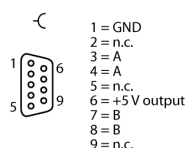
General data	
Operating ambient conditions	0...50 °C, 5...85 % rel. humidity, non-condensing
Storage ambient conditions	-20...70 °C, 5...85 % rel. humidity, non-condensing
Approvals	CE cULus
Ex approval	Haz. Loc. Class I, Division 2, Groups A, B, C and D
Protection class	IP66 front, IP20 rear NEMA type: 2/4X

Dimensions	
Front (W x H x D)	187 x 147 x 34 mm
Cut-out (W x H)	176 x 136 mm
Mounting depth	29+5 mm
Weight	approx. 0.6 kg



- 7" TFT wide screen color display
- LED backlight
- 800 x 480 pixel resolution
- 64 K colors
- Resistive touch screen
- 1 RJ45 Ethernet port
- 1 serial interface (RS232, RS485, RS422)
- 1 USB host port

Connection and pin assignment

	<p>Power Supply</p> <p>The power supply connector is delivered with each device. It can be reordered at Turck as accessories. Type designation: TX-Mount-xx</p>	<p>Pin Assignment</p> 
	<p>USB Interfaces</p>	<p>Pin Assignment</p> 
	<p>Ethernet Ports</p> <p>The Ethernet ports are connected to each other via an internal switch.</p> <p>Ethernet cables (examples):</p> <p>RJ45 male connector – RJ45 male connector: RJ45S-RJ45S-4414-2M (order number: 6441423)</p> <p>RJ45 male connector – M12 male connector, 4-pin, D-coded: RSSD-RJ45S-4414-2M (order number: 6441413)</p> <p>RJ45 male connector – M8 male connector, 4-pin: PSGS4M-RJ45S-4414-2M (order number: 6933005)</p> <p>RJ45 male connector – M12 female receptacle, 4-pin, D-coded: RJ45-FKSDD-4414-2M (order number: 6935282)</p>	<p>Pin Assignment</p> 
	<p>Serial Interface</p> <p>The serial interface can be operated either as RS232, RS485 or RS422. The adjacent wiring diagrams show the respective pin assignments.</p> <p>Attention: In the RS485 mode, pins 3 and 4 as well as 7 and 8 must be externally connected!</p>	<p>Pin Assignment in RS232 Operating Mode</p>  <p>Pin Assignment in RS485 Operating Mode</p>  <p>Pin Assignment in RS422 Operating Mode</p> 