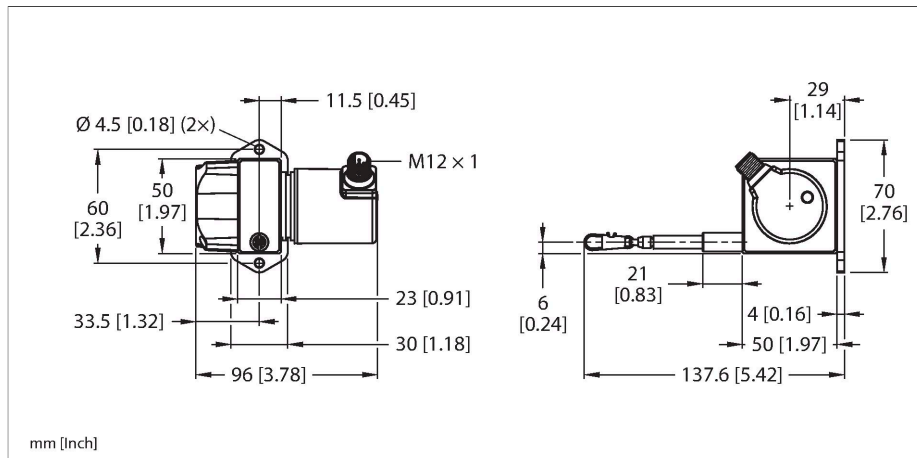


DWE-250-70-97-8B-H1151

Draw-Wire



Technical data

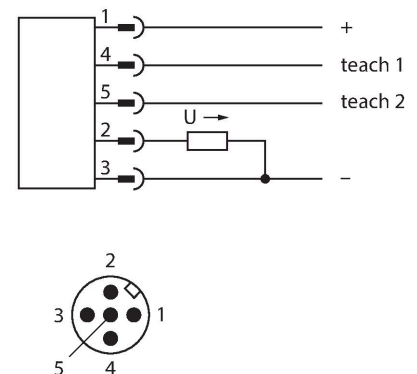
Type	DWE-250-70-97-8B-H1151
ID	100049337
Measuring principle	Magnetic
General data	
Measuring range	250 mm
Linearity deviation	≤ 0.05 %
Electrical data	
Operating voltage U_B	15...30 VDC
No-load current	≤ 35 mA
Short-circuit protection	yes
Wire break/reverse polarity protection	yes
Output function	5-pin, Analog output
Voltage output	0...10 V
DA converter resolution	12 Bit
Mechanical data	
Design	Draw Wire
Housing material	Titanium anodized aluminium
Encoder housing material	Die-cast zinc
min. extension force	5.6 N
max. extension force	7.2 N
max. extension speed	8 m/s
Pull acceleration max.	250 m/s ²
wire material	Stainless steel
Electrical connection	Connector, M12 × 1
Environmental conditions	
Ambient temperature	-20...+85 °C
Protection class	IP65

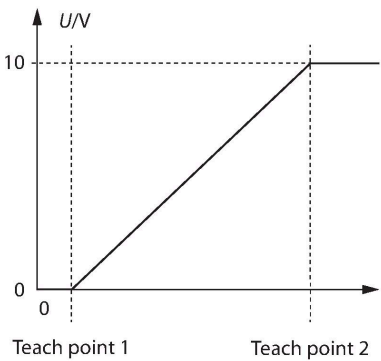


Features

- Compact, highly dynamic draw-wire sensor
- Measuring principle: magnetic
- With permanently installed analog encoder from the REM-97 product series
- Sensor protection class IP65
- -20...+85 °C
- 15...30 VDC
- Analog output, 0...10 V scalable up to 65,536 revolutions without limit switch/CW
- 12-bit resolution
- M12 × 1 connector, 5-pin
- Resolution: 12 bits on measuring range
- Measuring range can be scaled via teach-in inputs
- Start of the measuring range: U_B for min. 1 s on teach 1
- End of the measuring range: U_B for min. 1 s on teach 2

Wiring diagram





Measuring range settings

Only actuate the teach inputs when the shaft is at a standstill.

Bridge between Ub (pin 1) and	Teach input teach 1 (pin 4)	Teach input teach 2 (pin 5)	LED
>1 second	Set start point of measuring range		The green LED flashes once
>1 second		Set end point of measuring range. The measuring range must be >21 mm. A start point must have been set beforehand.	The green LED flashes three times
>1 second	Reset to factory setting. Connect teach 1 and teach 2 to UB simultaneously.		The LED flashes green, red, green

If the teach inputs are not used, they should be set to 0 V (GND ground) to avoid faults.

Accessories

RDR-1	1544753
-------	---------

Deflection roller for aluminium draw-wire sensors

