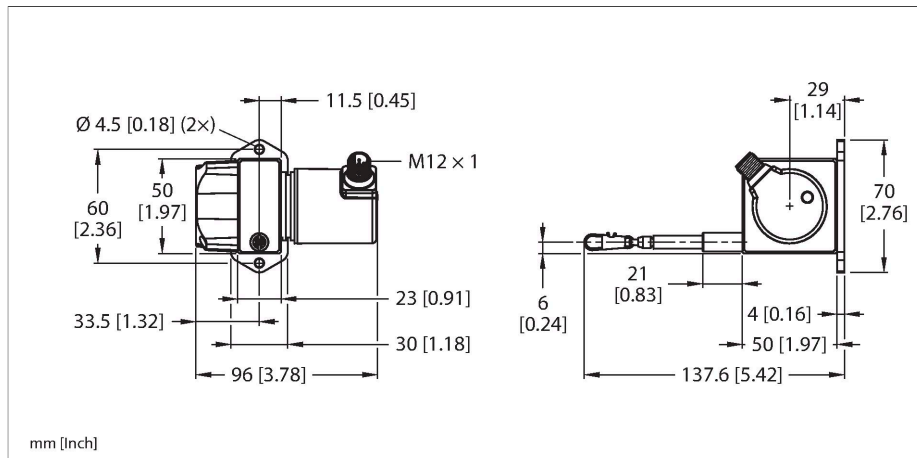


# DWE-250-70-101-9D38B-H1151

## Draw-Wire



### Technical data

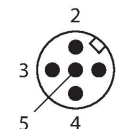
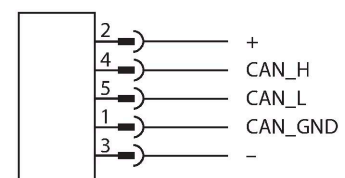
|                                        |                                                                                          |
|----------------------------------------|------------------------------------------------------------------------------------------|
| Type                                   | DWE-250-70-101-9D38B-H1151                                                               |
| ID                                     | 100049341                                                                                |
| Measuring principle                    | Magnetic                                                                                 |
| <b>General data</b>                    |                                                                                          |
| Measuring range                        | 250 mm                                                                                   |
| Linearity deviation                    | ≤ 0.05 %                                                                                 |
| <b>Electrical data</b>                 |                                                                                          |
| Operating voltage $U_b$                | 10...30 VDC                                                                              |
| No-load current                        | ≤ 90 mA                                                                                  |
| Short-circuit protection               | yes                                                                                      |
| Wire break/reverse polarity protection | yes                                                                                      |
| Communication protocol                 | CANopen                                                                                  |
| Interface                              | CAN High-Speed in accordance with ISO 11898, basic and full CAN, CAN specification 2.0 B |
| Node ID                                | 1...127 mit Software konfigurierbar                                                      |
| Baud rate                              | 10...1000 kbps can be configured using software                                          |
| <b>Mechanical data</b>                 |                                                                                          |
| Design                                 | Draw Wire                                                                                |
| Housing material                       | Titanium anodized aluminium                                                              |
| Encoder housing material               | Die-cast zinc                                                                            |
| min. extension force                   | 5.6 N                                                                                    |
| max. extension force                   | 7.2 N                                                                                    |
| max. extension speed                   | 8 m/s                                                                                    |
| Pull acceleration max.                 | 250 m/s <sup>2</sup>                                                                     |
| wire material                          | Stainless steel                                                                          |
| Electrical connection                  | Connector, M12 × 1                                                                       |



### Features

- Compact, highly dynamic draw-wire sensor
- With permanently installed CANopen encoder from the REM-101 product series
- Measuring principle: magnetic
- Sensor protection class IP65
- -20...+85 °C
- 10...30 VDC
- CANopen
- M12 × 1 connector, 5-pin

### Wiring diagram



Technical data

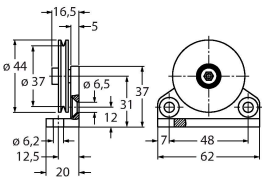
| Environmental conditions |              |
|--------------------------|--------------|
| Ambient temperature      | -20...+85 °C |
| Protection class         | IP65         |

Mounting instructions

| Mounting instructions/Description |                                                                                                                                                                                                                                                                                             |
|-----------------------------------|---------------------------------------------------------------------------------------------------------------------------------------------------------------------------------------------------------------------------------------------------------------------------------------------|
|                                   | <p>CANbus connection</p> <p>The CANopen encoders are equipped with an M12 male connector and can be terminated in the device. The devices are not equipped with an integrated T-coupler and looped-through bus and should therefore be used only as end devices (see also Accessories).</p> |

Accessories

|                                                   |         |
|---------------------------------------------------|---------|
| RDR-1                                             | 1544753 |
| Deflection roller for aluminium draw-wire sensors |         |



Accessories

| Dimension drawing | Type       | ID      |                                                                                                                                               |
|-------------------|------------|---------|-----------------------------------------------------------------------------------------------------------------------------------------------|
|                   | FSM-2FKM57 | 6622101 | CANopen/DeviceNet/power supply T-splitter, 1 × M12 male connector, 2 × M12 female connector, 5-pin                                            |
|                   | RKC5701-5M | 6931034 | Bus cable for CAN (DeviceNet, - CANopen), M12 female connector, straight, cable length: 5 m, jacket material: PUR, anthracite; cULus approval |