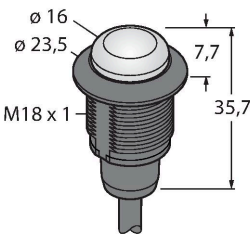


S18LGRYP

LED Signal Light – Beacon



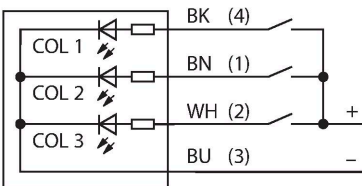
Technical data

| | |
|------------------------------------|-------------------------------|
| Type | S18LGRYP |
| ID | 3021218 |
| Signal and display data | |
| Purpose | LED indicator light |
| Function | Spotlight |
| Light type | Green Red Yellow |
| Dimmable | No |
| Features of color 1 | Green, Permanently on, 4.1 lm |
| Features of color 2 | Red, 1.1 lm |
| Features of color 3 | Yellow, 0.8 lm |
| Special features | Wash down |
| Electrical data | |
| Operating voltage U_B | 10...30 VDC |
| DC rated operating current I_o | ≤ 25 mA |
| Max. current consumption per color | 25 mA |
| Input type | PNP |
| Response time typical | < 1 ms |
| Mechanical data | |
| Cascadable | No |
| Design | Threaded barrel, S18L |
| Dimensions | Ø 23.5 x 35.7 mm |
| Housing material | Plastic, PC, Black |
| Window material | Polycarbonate, diffuse |
| Electrical connection | Cable, 2 m, PVC |
| Number of cores | 4 |

Features

- LED all-round visible
- Individually controllable
- Mechanical screw-in thread M18x1
- Protection classes IP67 / IP69K
- UV-resistant materials
- Current consumption per LED color: max. 25 mA
- Multicolor: Green (COL 1) / Red (COL 2) / Yellow (COL 3)
- Cable 2 m
- Operating voltage 10...30 VDC

Wiring diagram



Functional principle

These LED beacons in robust IP67/IP69K rated design are suited for indoor and outdoor areas. The plastic housing is UV-resistant. The light-emitting surface is visible at an angle of 180° relative to the installation surface. The unique, grey off state allows a good identification, even in sunlight. Depending on the connection, one of the three LED colors is on during the period of an input signal.

Technical data

| | |
|---------------------|---------------|
| Ambient temperature | -40...+50 °C |
| Protection class | IP67 IP69 |
| Tests/approvals | |
| Approvals | CE, UL listed |