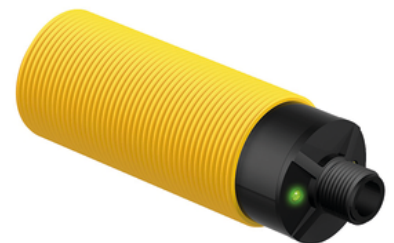


# S30AW3REQ1

## Photoelectric Sensor – Opposed Mode Sensor Pair

### Technical data

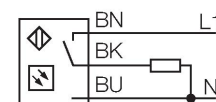
Type	S30AW3REQ1
ID	3037090
<b>Optical data</b>	
Function	Opposed mode sensor
Operating mode	Emitter/receiver pair
Light type	IR
Wavelength	880 nm
Range	0...60000 mm
<b>Electrical data</b>	
Operating voltage	20...250 VAC
AC rated operational current	≤ 200 mA
Output function	Light operation, Relay output
Switching frequency	≤ 40 Hz
Readiness delay	≤ 100 ms
Response time typical	< 16 ms
<b>Mechanical data</b>	
Design	Tube, S30
Dimensions	Ø 30 x 89.4 mm
Housing material	Plastic, Thermoplastic material
Lens	plastic, Acrylic
Electrical connection	Connector, 1/2", PVC
Number of cores	4
Ambient temperature	-40...+70 °C
Protection class	IP69
Special features	Encapsulated Wash down
Power-on indication	LED, Green
Switching state	LED, Yellow
Excess gain indication	LED
<b>Tests/approvals</b>	
Approvals	CE, UL, CSA



### Features

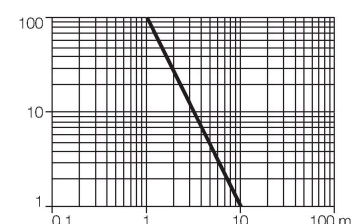
- Male ½ ", 4-pin
- Protection classes IP67/IP69K
- Ambient temperature: -40...+70 ° C

### Wiring diagram



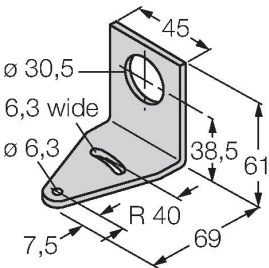
### Functional principle

Opposed mode sensors consist of an emitter and receiver. They are installed opposite each other so that the light from the emitter is aimed directly at the receiver. When an object interrupts or weakens the light beam, the sensor switches. Opposed mode sensors are the most reliable photoelectric sensors for detection of opaque targets. An excellent contrast between light and dark conditions and an extremely high excess gain are typical of this sensing mode, thus allowing operation over larger distances and under difficult conditions. Excess gain curve  
Excess gain in relation to the distance



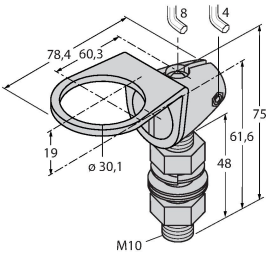
Accessories

SMB30A 3032723



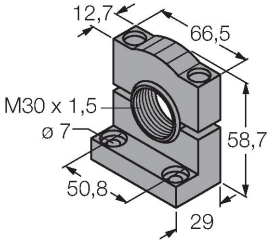
Mounting bracket, rectangular, stainless steel, for sensors with 30mm thread

SMB30FAM10 3011185



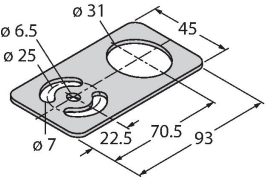
Mounting bracket, stainless steel, for M10 x 1.5 thread, thread length 30 mm

SMB30SC 3052521



Mounting bracket, PBT black, for sensors with 30 mm thread, rotatable

SMBAMS30P 3073135



Mounting bracket, stainless steel, for sensors with 30 mm thread