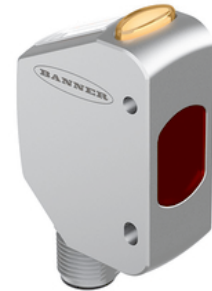
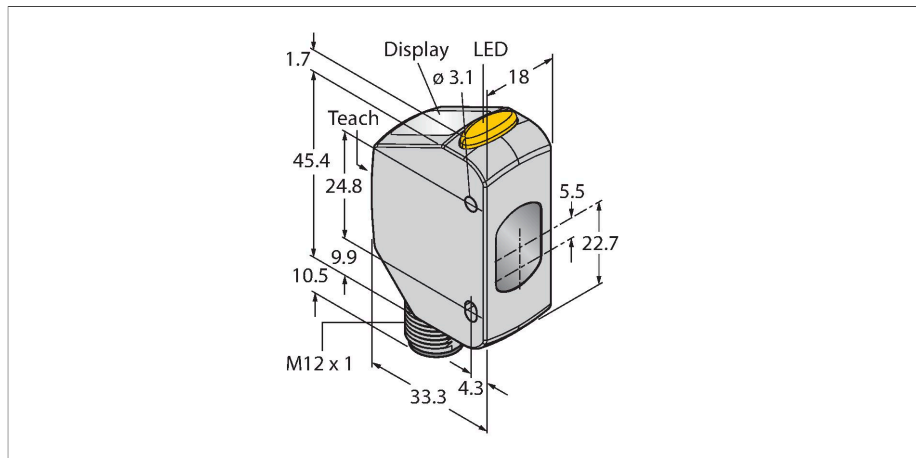


Q4XFILAF610-Q8

Photoelectric Sensor – Laser Distance Sensor (Triangulation)



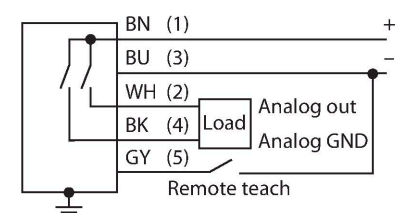
Technical data

Type	Q4XFILAF610-Q8
ID	3809946
Optical data	
Function	Proximity switch
Operating mode	Background/foreground suppression
Light type	Red
Wavelength	655 nm
Laser class	▲ 1
Optical resolution	2 mm
Repeatability	1 mm
Range	35...610 mm
Ambient light immunity	> 5000 lux
Electrical data	
Operating voltage	10...30 VDC
DC rated operational current	≤ 28 mA
Short-circuit protection	yes
Reverse polarity protection	yes
Output function	Analog output
Type of analog output	4...20 mA
Current output	4...20 mA
Load resistance	≤ 1000 Ω
Readiness delay	≤ 750 ms
Response time typical	< 0.5 ms
Mechanical data	
Design	Rectangular, Q4X
Dimensions	33.5 x 18 x 57.5 mm
Housing material	Stainless steel, 1.4404 (AISI 316L)

Features

- 4-digit 7-segment LED display
- 3 buttons
- Output indicator (yellow)
- IP67/69K
- ECOLAB-certified
- Range: 35...610 mm
- Laser class 1, red, 655 nm, acc. to IEC 60825-1:2014
- Operating voltage: 12...30 VDC
- Analog output: 4 ... 20 mA
- Rectangular design
- Stainless steel housing (1.4404)

Wiring diagram



Functional principle

The Q4X is a laser-distance sensor working on the principle of laser triangulation. It has a range of 35...610 mm, a resolution of up to 0.3 mm and an analog laser class 1 current output (4...20 mA).

With the dual mode functionality, the Q4X captures not only distances but also the light intensity that is reflected by an object. This unique feature allows lasers to be used for applications that would have been inconceivable before this.

In RUN mode, you can change the switching point, adjust light and dark switching and teach the sensor accordingly. Another sensor status is setup mode. In setup mode, you can

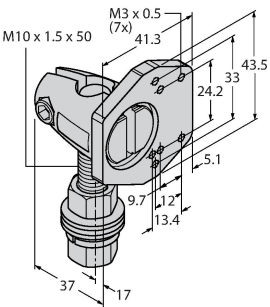
Technical data

Lens	acrylic, PMMA
Electrical connection	Connector, M12 × 1
Ambient temperature	-10...+50 °C
Storage temperature	-25...+75 °C
Relative humidity	35...95 %
Protection class	IP67 IP69K
Special features	Chemical-resistant
Switching state	LED, Yellow
Display	4-digit 7-segment LED display
Tests/approvals	
Vibration resistance	MIL-STD-202G, Method 201A (10 to 60 Hz, 1.52 mm peak to peak amplitude, for 2 hours along the x, y and z-axis), sensor operating
Shock test	MIL-STD-202G, Method 213B Condition I (100G 6x along the XYZ-axis, 18 impacts), sensor in operation
Approvals	CE, cULus, ECOLAB

select teach mode, all standard operating parameters or a factory reset.

Accessories

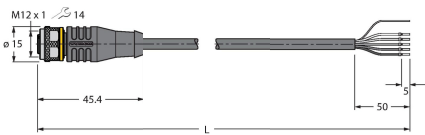
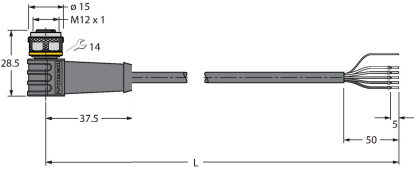
SMBQ4XFAM10 3091513



Mounting bracket, rotatable, stainless steel, for sensors of the Q4X/Q3X series, M10 x 1.5 thread

Accessories

Dimension drawing	Type	ID	
	RKC4.5T-2/TEL	6625016	Connection cable, female M12, straight, 5-pin, cable length: 2 m, sheath material: PVC, black; cULus approval; other cable lengths and qualities available, see www.turck.com
	RKH4.5-2/TFG	6933455	Connection cable, M12 female, straight, 5-pin, stainless steel coupling nut, cable length: 2 m, jacket material: TPE, gray, temperature range -40...+105 °C; other cable lengths and designs available, see www.turck.com

Dimension drawing	Type	ID	
	RKS4.5T-2/TEL	6626361	Connection cable, M12 female connector, straight, 5-pin, cable length: 2 m, sheath material: PVC, black; shielded; cULus approval; other cable lengths and qualities available, see www.turck.com
	WKS4.5T-2/TEL	6626364	Connection cable, M12 female connector, angled, 5-pin, cable length: 2 m, sheath material: PVC, black; shielded; cULus approval; other cable lengths and qualities available, see www.turck.com