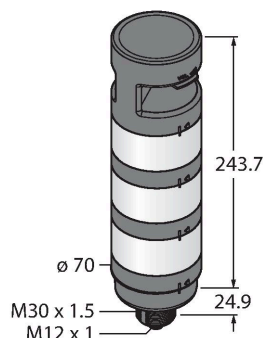


TL70B-GYRAQ

LED Signal Light – Modular Signal Tower

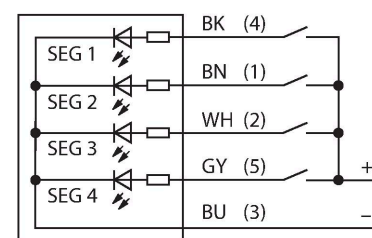
Preassembled



Features

- Plastic housing, black
- EMI and RFI immune
- Protection class IP65
- M12 × 1 male connector
- Monochrome: White
- Switchable between permanent and flashing function
- Operating voltage: 12...30 VDC
- Inputs: PNP/NPN
- Configuration via DIP switch
- Beeper: sealed, omnidirectional, intensity can be adjusted via selector switch, max. 92 dB

Wiring diagram



Functional principle

The rugged multifunction tower lights are available in many variations and are easily mounted. Each tower can be assembled of up to five color segments and, optionally, a beeper. All segments are configurable via DIP switches.

5 colors are available, blue (B), green (G), red (R), yellow (Y) and white (W), which can be used in any combination.

The arrangement of the segments can be modified subsequently and also more segments can be added. Via the basic module the respective port is selected. Pre-assembled versions are also available.

Technical data

Type	TL70B-GYRAQ
ID	3814502
Signal and display data	
Purpose	LED indicator light
Function	Tower light
Light type	Green Yellow Red
Aperture angle degree	360 °
LED service life (L70)	50000 h
Dimmable	No
Electrical data	
Operating voltage U_B	12...30 VDC
Response time typical	< 180 ms
Mechanical data	
Cascadable	No
Design	Cylindrical/Smooth, TL70
Dimensions	Ø 70 mm
Housing material	Plastic, PC
Electrical connection	Connector, M12 × 1
Ambient temperature	-40...+50 °C
Protection class	IP65
Tests/approvals	
Approvals	CE, UL listed

