

# SESP4SL

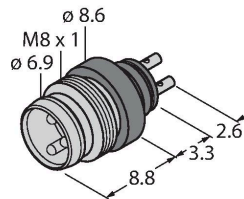
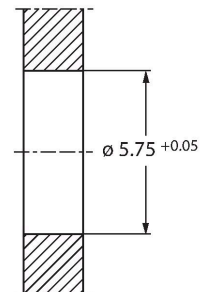
## M8 × 1/Ø 8 mm Round Connector – Ø 8/M8 × 1 mm Built-in Connector, Screw-/Snap-on Type

### Features



- Robust and pre-assembled flange connector
- 4-pin
- Potted, protection class IP67
- GOST-R-approved
- RoHS-compliant
- Solder contact

### Contact assignment



### Technical data

|   |                          |
|---|--------------------------|
| Type                                      | SESP4SL                  |
| ID  | 6934784                  |
| Connector A                               | Male, M8 × 1             |
| Number of Pins                            | 4                        |
| Contacts                                  | Metal, CuZn, Gold-plated |
| Contact carriers                          | Plastic, PA, Black       |
| Flange housing                            | Plastic, PA, black       |
| Connection mode                           | Solder contact           |
| Mechanical lifespan                       | > 100 Mating cycles      |
| Pollution degree                          | 3/2                      |
| Protection class                          | IP67, (plugged)          |
| Rated voltage                             | 30 V                     |
| Current                                   | 4 A                      |
| Insulation resistance                     | ≥ 10 <sup>9</sup> Ω      |
| <b>Mechanical and chemical properties</b> |                          |
| Ambient temperature range (stationary)    | -30...+90 °C             |