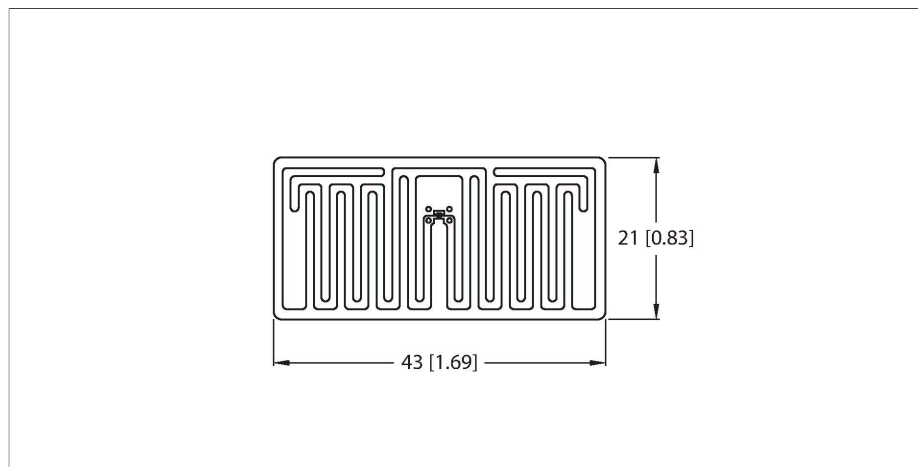


TW860-960-L43-21-F-B38-100PCS

UHF Tag



Features

- EEPROM, memory 38 byte
- TID serial number: 4 byte
- Not for direct mounting on metal

Functional principle

The UHF read/write heads form an air interface the size of which may vary, depending on the combination of read/write head and tag used. The read/write distances mentioned here only represent standard values measured under laboratory conditions, free from any influences caused by surrounding materials. Attainable distances may vary due to component tolerances, mounting conditions, ambient conditions and material qualities, especially when mounted in metal. Testing of the application under real operating conditions is therefore essential, especially with on-the-fly reading and writing!

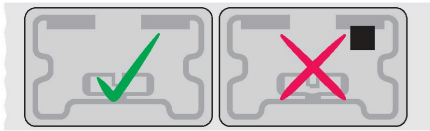
Technical data

Type	TW860-960-L43-21-F-B38-100PCS
ID	7030623
Remark to product	Not suitable for direct mounting on metal
Data transfer	Alternating electromagnetic field
Technology	UHF RFID
Region (UHF)	Global (860...960 MHz) ETSI (865...868 MHz) FCC (902...928 MHz)
Reading range	3 m (2W ERP)
Memory type	EEPROM
Chip	NXP U-Code G2iL
Memory	38 Byte
Memory	Read/Write
Freely usable memory	0 Byte
EPC memory	16 byte
Number of read operations	unlimited
Number of write operations	10 ⁵
Typical read time	2 ms/Byte
Typical write time	3 ms/Byte
Radio communication and protocol standards	ISO 18000-63 EPCglobal Gen 2
Ambient temperature	-40...+85 °C
Temperature during read/write access	-40...+85 °C
Temperature outside detection range	-40...+85 °C
Design	Smart Label
Housing length	43 mm
Housing width	21 mm
Housing material	Plastic, PET

Technical data

Active area material	Plastic, PET
Protection class	IP40
Packaging unit	100

Mounting instructions/Description



General Information

When mounting the tags, only remove them from the roll immediately before affixing them. Remove any dirt from the surfaces to be bonded and allow to dry. Liquids, oils, greases and other substances can reduce the effectiveness of the adhesive. If possible, affix the tag at room temperature (20–25 °C).

Defective tags are indicated by a black dot. Please do not use this tag. Upon delivery, the number of marked defective tags is added to the total number of Smart Labels delivered.