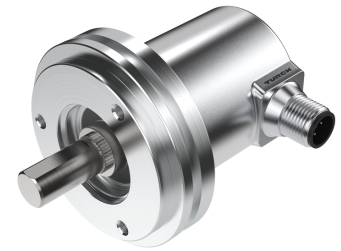
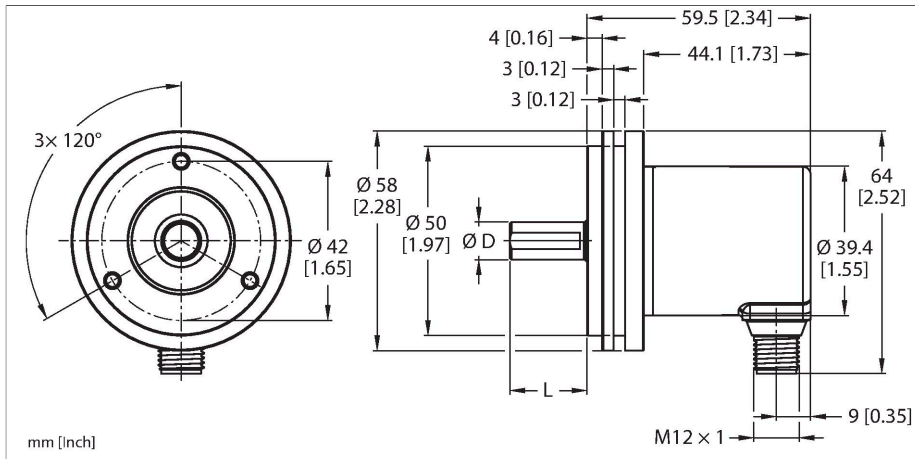


REM-116T6S-7AAL-H1151

Absolute encoder - Multiturn

Industrial-Line



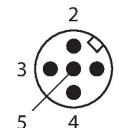
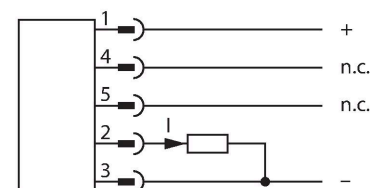
Technische gegevens

| | |
|---|-----------------------|
| Type | REM-116T6S-7AAL-H1151 |
| Identnr. | 100011417 |
| Meetprincipe | magnetisch |
| Algemene gegevens | |
| Max. Rotational Speed | 4000 rpm |
| Absolute nauwkeurigheid | ± 1 ° Bij 25 °C |
| Uitgangstype | Absoluut-multiturn |
| Elektrische gegevens | |
| Bedrijfsspanning | 10...30 VDC |
| Eigen stroomopname | 38 mA |
| Kortsluitbeveiliging | Ja |
| Draadbreukbeveiliging / Ompoolbeveiliging | Ja |
| Uitgangsfunctie | Analoge uitgang |
| Stroomuitgang | 4...20 mA |
| Resolutie DA-omvormer | 12 Bit |
| Mechanische gegevens | |
| Bouwvorm | volle as |
| Flenstype | synchroflens |
| Flensdiameter | Ø 58 mm |
| Astype | Massieve as |
| Asdiameter D [mm] | 6 |
| Golflengte L [mm] | 12.5 |
| Asmateriaal | niet roestend staal |
| Materiaal behuizing | sputgegoten zink |
| Elektrische aansluiting | Connector, M12 x 1 |

Kenmerken

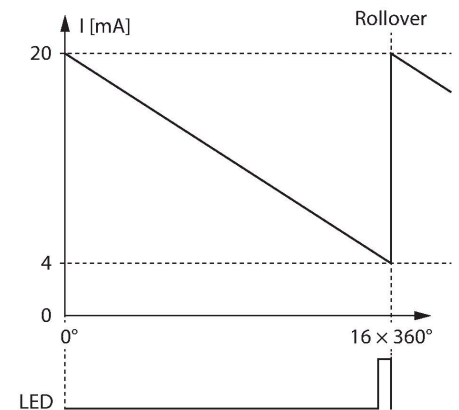
- Synchroflens, Ø 58 mm
- Massieve as, Ø 6 mm x 12,5 mm
- Magnetisch meetprincipe
- Asmateriaal: Roestvast staal
- Beschermingsklasse IP65 huis- en aszijde
- -40...+85 °C
- max. 4000 omwentelingen/min (continue werking: 2000)
- Energy Harvesting-technologie
- 10...30 V DC
- Analoge uitgang, 4...20 mA op 16 omwentelingen linksom
- 12 bit resolutie
- Connector, M12 x 1, 5-polig

Aansluitschema



Technische gegevens

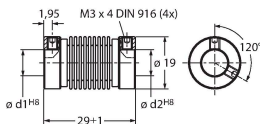
| | |
|------------------------------------|--|
| | 5-polig |
| Axiale asbelastbaarheid | 40 N |
| Radiale asbelastbaarheid | 80 N |
| Omgevingsomstandigheden | |
| Omgevingstemperatuur | -40...+85 °C |
| Trilbestendigheid (EN 60068-2-6) | 30 g (300 m/s ²), 10...2000 Hz |
| Schokbestendigheid (EN 60068-2-27) | 500 g (2500 m/s ²), 4 ms |
| Beschermingsgraad | IP65 |
| Protection class shaft | IP65 |



Toebehoren

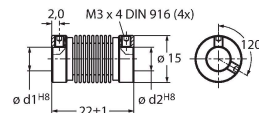
RCS-19-06-06 1545360

Balgkoppeling, buitendiameter: 19 mm, boringdiameter: 6 mm/6 mm



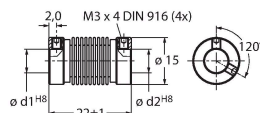
RCS-15-08-06 1545361

Balgkoppeling, buitendiameter: 15 mm, boringdiameter: 8 mm/6 mm



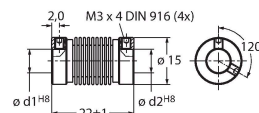
RCS-15-06-06 1545362

Balgkoppeling, buitendiameter: 15 mm, boringdiameter: 6 mm/6 mm



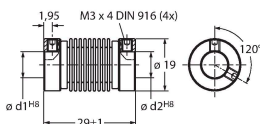
RCS-15-06-04 1545363

Balgkoppeling, buitendiameter: 15 mm, boringdiameter: 6 mm/4 mm



RCS-19-10-06 1545358

Balgkoppeling, buitendiameter: 19 mm, boringdiameter: 10 mm/6 mm



Toebehoren

| Afmetingen | Type | Identnr. | |
|------------|---------------|----------|--|
| | RKC4.5T-2/TEL | 6625016 | Aansluitkabel, M12-contraconnector, recht, 5-polig, kabellengte: 2 m, mantelmateriaal: Pvc, zwart; cULus-goedkeuring |

